



CAYMAN ISLANDS SHIPPING REGISTRY

Maritime Authority of the Cayman Islands

FLYER TO THE LARGE YACHT INDUSTRY

Accident in Passenger Lift Resulting In Serious Injuries

The **Second Engineer** on a large yacht (1,500 GT) was preparing the passenger lift for a service technician to undertake remedial work on the decorative coverings in the lift shaft. Two sides of the lift shaft were transparent glass and the other sides had decorative coverings of stone and copper patina. The technician was not affiliated with the lift manufacturer, or any lift servicing supplier, and was onboard purely to attend to the decorative coverings in the lift shaft.

The Second Engineer called the lift car to the Bridge Deck and then entered the lift shaft onto the car top by manually opening the door on the Sun Deck and stepping onto the car top. When the lift doors on the Sun Deck closed, the lift rose to the Sun Deck position crushing the Second Engineer between the car top and the top of the lift shaft. The Second Engineer sustained severe injuries to his legs and ankles and is expected to be off work for at least three months.

The circumstances surrounding this accident are still under investigation. This Safety Flyer is intended to highlight the dangers associated with working in lift shafts and the appropriate safety precautions that should be employed when undertaking such work.

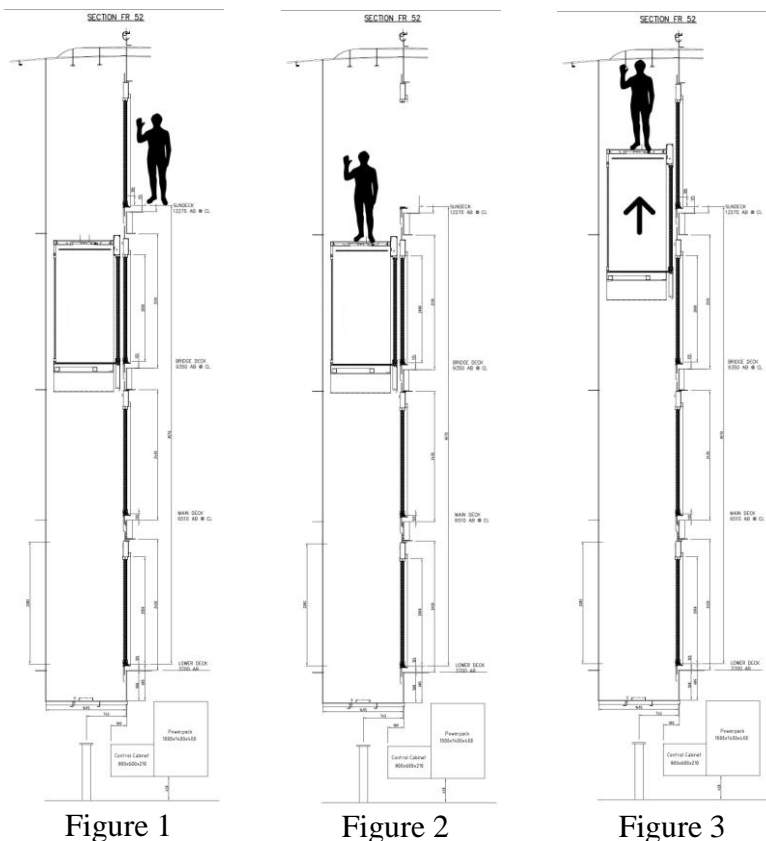


Figure 1: The Second Engineer calls the lift to the Bridge Deck in preparation for entry into the lift shaft.

Figure 2: The Second Engineer opens the doors on the Sun Deck and enters the lift shaft by stepping on the car top.

Figure 3: When the lift doors on the Sun Deck close, the lift rises to the Sun Deck level trapping the Second Engineer between the car top and the top of the lift shaft.

CAYMAN ISLANDS SHIPPING REGISTRY

Maritime Authority of the Cayman Islands

Safety Issues

- Working in the shafts and pits of passenger lifts is potentially dangerous and accidents in the past have resulted in many serious injuries and fatalities.
- An initial risk assessment should be made to identify hazards associated with work on each lift installation, including work requiring access to the lift shaft and pit.
- Safe working procedures should be drawn up for each lift installation. Persons who are authorised to carry out work on the lift installation must comply with these procedures.
- A permit to work system should be adopted when it is necessary for personnel to enter a lift shaft / pit or to override the control systems for any reason.
- Any work carried out must only be performed by authorised persons familiar with the work and the appropriate safe working procedures.
- Appropriate safety signs must be prominently displayed in the area and also on control equipment such as call buttons. Barriers should be in place if shaft doors are to remain open.
- Before attempting to gain access to the shaft / pit of any lift installation, the mains switch should be locked in the OFF position whenever possible.
- The Code of Safe Working Practices for Merchant Seamen contains valuable guidance on safety precautions to be adopted when working with lifts onboard ships and yachts.

NOTE

This document, containing urgent safety information, has been produced for marine safety purposes only, on the basis of information available to date. The sole objective of the investigation of any accident which is conducted under the Cayman Islands Merchant Shipping Law (2008 Revision) is the prevention of future accidents through the ascertainment of its causes and circumstances. It is not the purpose of an investigation to determine liability or, except as it is necessary to achieve its objective, to apportion blame.

18 November 2011